



## KIEWA VALLEY PRIMARY SCHOOL

### STATEMENT OF VALUES and SCHOOL PHILOSOPHY POLICY



#### Help for non-English speakers

If you need help to understand the information in this policy please contact the Front Office on 0260273275

#### PURPOSE

The purpose of this policy is to outline the values of our school community and explain the vision, mission and objectives of our school.

#### POLICY

Kiewa Valley Primary School is committed to providing a safe, supportive and inclusive environment for all students, staff and members of our community. Our school recognises the importance of the partnership between our school and parents and carers to support student learning, engagement and wellbeing. We share a commitment to, and a responsibility for, creating an inclusive and safe school environment for our students.

The programs and teaching at Kiewa Valley Primary School support and promote the principles and practice of Australian democracy, including a commitment to:

- elected government
- the rule of law
- equal rights for all before the law
- freedom of religion
- freedom of speech and association
- the values of openness and tolerance.

This policy outlines our school's vision, mission, objective, values and expectations of our school community. This policy is available on our school website, our staff induction handbook, and enrolment/transition packs.

To celebrate and embed our Statement of Values and Philosophy in our school community, we

- display posters and banners that promote our values in our school
- celebrate our values in our school newsletter
- provide awards and recognition for students who actively demonstrate the values
- discuss our values with students in the classroom, meetings and assemblies.

#### VISION

Kiewa Valley Primary School's vision is ***"Our community grows together through kindness, as empowered creative learners, who believe we can all make a difference"***.

## MISSION





Kiewa Valley Primary School's mission is to provide students with the best possible foundation in life through a well-rounded education.

## OBJECTIVE

Our school's objectives are considered as part of the 4 yearly strategic planning process and reflected in the goals listed in our current School Strategic Plan (SSP). We also develop an Annual Implementation Plan to operationalise the goals and key improvement strategies contained in our SSP.

## VALUES

Kiewa Valley Primary School's values are; Kindness, Respect, Integrity & Inclusion.

Kiewa Valley Primary School Positive Teaching Matrix							
All Areas	Learning Spaces	Yard, Oval, Playground	Eating Areas	Toilets	Bus	Hallway/ Breezeways	OHSC
<b>Respect</b>  <ul style="list-style-type: none"> <li>Use manners</li> <li>Look after equipment and my belongings</li> <li>Use appropriate talking voice</li> <li>Follow adult instructions</li> </ul>	<ul style="list-style-type: none"> <li>Use whole body listening</li> <li>Take turns in discussions</li> <li>Allow everyone to learn in a calm and safe environment</li> </ul>	<ul style="list-style-type: none"> <li>Wait my turn</li> <li>Be a good sport</li> <li>Take care of our buildings, grounds and environment</li> </ul>	<ul style="list-style-type: none"> <li>Put rubbish in bins</li> <li>Sit quietly when eating for allocated time</li> <li>Chew with our mouths closed</li> </ul>	<ul style="list-style-type: none"> <li>Flush the toilets</li> <li>Use toilets only when I need to</li> <li>Wait my turn quietly</li> </ul>	<ul style="list-style-type: none"> <li>Remain in seat</li> <li>Keep feet off bus seats</li> <li>Talk quietly to the people around you</li> <li>Line up quietly</li> </ul>	<ul style="list-style-type: none"> <li>Only touch my belongings</li> <li>Keep hallways neat and tidy</li> </ul>	<ul style="list-style-type: none"> <li>Leave the spaces as you found it</li> </ul>
<b>Inclusion</b>  <ul style="list-style-type: none"> <li>Accept everyone for who they are</li> <li>Consider all students sensory needs</li> <li>Ensure rules are inclusive</li> </ul>	<ul style="list-style-type: none"> <li>Work with classmates in a positive manner</li> <li>Regulate my emotions</li> <li>Be in the green zone for learning</li> </ul>	<ul style="list-style-type: none"> <li>Be open to new friendships</li> <li>Play by the rules of the game</li> </ul>	<ul style="list-style-type: none"> <li>Invite new people to join our eating circle</li> </ul>	<ul style="list-style-type: none"> <li>Keep toilets clean</li> <li>Ensure everyone's privacy</li> </ul>	<ul style="list-style-type: none"> <li>Sit with different people when allowed</li> <li>Share bus roll responsibility</li> </ul>	<ul style="list-style-type: none"> <li>Allow others to move through spaces safely</li> <li>Be safe so everyone feels safe</li> </ul>	<ul style="list-style-type: none"> <li>Be inclusive of all students in all year levels</li> </ul>
<b>Integrity</b>  <ul style="list-style-type: none"> <li>Be inside only if I have permission</li> <li>Clean up after myself</li> <li>Be my best self</li> <li>Be honest and trustworthy</li> </ul>	<ul style="list-style-type: none"> <li>Sit on chair correctly</li> <li>Keep my body to myself</li> <li>Take on feedback</li> <li>Stay on task</li> </ul>	<ul style="list-style-type: none"> <li>Ask for help from adults when needed</li> <li>Return to classroom on time</li> <li>Wear my hat when I need to</li> </ul>	<ul style="list-style-type: none"> <li>Try for a rubbish free lunch</li> <li>Put our food scraps in the right bin</li> <li>Eat my own food, healthy food first</li> </ul>	<ul style="list-style-type: none"> <li>Wash my hands with soap and water</li> <li>Dry my hands and put paper towel in bin</li> <li>Use toilets during break times</li> </ul>	<ul style="list-style-type: none"> <li>Sit in allocated seat</li> <li>Keep seat belt on at all times</li> <li>Follow the device use guidelines</li> </ul>	<ul style="list-style-type: none"> <li>Unpack and pack bag</li> <li>Carry belongings to class safely</li> <li>Walk quietly</li> </ul>	<ul style="list-style-type: none"> <li>Follow the school values and expectations at all times</li> </ul>
<b>Kindness</b>  <ul style="list-style-type: none"> <li>Share and take turns</li> <li>Use kind words</li> </ul>	<ul style="list-style-type: none"> <li>Encourage peers with a growth mindset</li> <li>Use positive language</li> </ul>	<ul style="list-style-type: none"> <li>Help others in need</li> <li>Share with others</li> <li>Give people space when they need it</li> </ul>	<ul style="list-style-type: none"> <li>Ensure our area is clean before we go and play</li> </ul>	<ul style="list-style-type: none"> <li>Ensure toilet doors are closed</li> <li>Conserve water and resources</li> <li>Keep toilets quiet and calm</li> </ul>	<ul style="list-style-type: none"> <li>Use kind words on the bus</li> <li>Greet and thank the bus drivers and staff</li> </ul>	<ul style="list-style-type: none"> <li>Open doors for others</li> <li>Wait at the door if someone else is coming through</li> </ul>	<ul style="list-style-type: none"> <li>Thank our carers</li> <li>Offer to help and assist carers and younger students</li> </ul>

**KVPS SCHOOL MOTTO:** At KVPS we also teach our students about the 4B's of; Believe, Belong, Become, Be Kind.

## We BELIEVE at KUPS

We believe in ourselves.	We try our best and never give up.	We keep going, even when things are hard.	We know that mistakes help us learn.
We believe we can do anything if we try!			We are kind. We help people and include everyone.
We treat others the way we want to be treated.			We are friendly and make new friends.
We do the right thing, even when no one is looking.	We are honest and fair.	Everyone gets a turn and a chance to have their say.	We believe in being our best!

## We BELONG at KUPS

We feel safe and supported.	We include everyone and show kindness.	Everyone is welcome here.	We help new people feel included.
We treat others with respect.			It's okay to be different.
Everyone gets to join in.			This school feels like home.
We look out for each other.	We cheer each other on.	Learning is fun and safe.	Everyone's voice matters.

## We BECOME at KUPS

We keep trying, even when it's hard.	We learn from our mistakes.	We say, "I can't do this...YET."	We become our best selves, one step at a time.
We ask for help, when we need it.			We challenge ourselves.
We try new strategies.			We believe in ourselves and others.
We practise to improve.	We step into the learning pit with courage.	We grow in the learning pit.	We think positively and stretch our brains like bubblegum.

## We BE KIND at KUPS

We treat others the way we want to be treated.	We include everyone.	We stand up for others.	We spread kindness everyday like confetti.
We respect others and belongings.			We smile and use manners.
We say kind words.			We cheer others on.
We share and take turns.	We ask, 'R U Ok?'	We make people feel happy and safe.	We fill each other's buckets.

### BEHAVIOURAL EXPECTATIONS

Kiewa Valley Primary School acknowledges that the behaviour of staff, parents, carers and students has an impact on our school community and culture.

We acknowledge a shared responsibility to create a positive learning environment for the children and young people at our school.

Shared expectations of staff, parents, carers and students to support positive student behaviour are set out in the [Respectful, safe, engaged: shared expectations to support student behaviour statement](#).

**Students** are also supported by school staff to meet expected standards of behaviour as outlined in our Student Wellbeing and Engagement Policy, Inclusion and Diversity Policy, Bullying Prevention Policy and through our School Wide Positive Behaviour Strategy (Appendix 1).

**Staff** must follow our school and department policies and the Victorian Public Service Code of Conduct and Values. Teaching staff also adhere to the [Victorian Teaching Profession's Code of Conduct](#).

**Parents and carers** play a vital role in helping their child understand and meet shared behaviour expectations. Additionally, information about the expectations of parents and carers to ensure schools remain respectful and inclusive places is outlined in the department's [Respectful Behaviours within the School Community Policy](#), and our Respect for School Staff Policy. Schools can share these expectations through use of [posters](#) available in over [30 translated languages](#).

## UNREASONABLE BEHAVIOURS

Schools are not public places, and the Principal has the right to permit or deny entry to school grounds (for more information, see our *Visitors Policy*).

Unreasonable behaviour that is demonstrated by school staff, parents, carers, students or members of our school community will not be tolerated at school, or during school activities.

Unreasonable behaviour includes:

- being violent or threatening violence of any kind, including physically intimidating behaviour such as aggressive hand gestures or invading another person's personal space
- speaking or behaving in a rude, aggressive or threatening way, either in person, via email, social media, or over the telephone
- sending demanding, rude, confronting or threatening letters, emails or text messages
- discriminatory or derogatory comments
- the use of social media or public forums to make inappropriate or threatening remarks about the school, staff or students.

Harassment, bullying, violence, aggression, threatening behaviour and unlawful discrimination are unacceptable and will not be tolerated at our school.

Unreasonable behaviour and/or failure to uphold the principles of this *Statement of Values and School Philosophy* may lead to further investigation and the implementation of appropriate consequences by the Principal.

At the Principal's discretion, unreasonable behaviour may be managed by:

- requesting that the parties attend a mediation or counselling sessions
- implementing specific communication protocols
- written warnings
- conditions of entry to school grounds or school activities
- exclusion from school grounds or attendance at school activities
- reports to Victoria Police
- legal action.

Inappropriate student behaviour will be managed in accordance with our school's *Student Wellbeing and Engagement Policy* and *Bullying Prevention Policy*.

Our *Statement of Values and School Philosophy* ensures that everyone in our school community will be treated with fairness and respect. In turn, we will strive to create a school that is inclusive and safe, where everyone is empowered to participate and learn.

## COMMUNICATION

This policy will be communicated to our school community in the following ways

- Available publicly on our school’s website
- Included in staff induction processes
- Included in staff handbook/manual
- Included in transition and enrolment packs
- Included as annual reference in school newsletter
- Made available in hard copy from the school administration upon request

## RELATED POLICIES AND RESOURCES

Department of Education policies and resources:

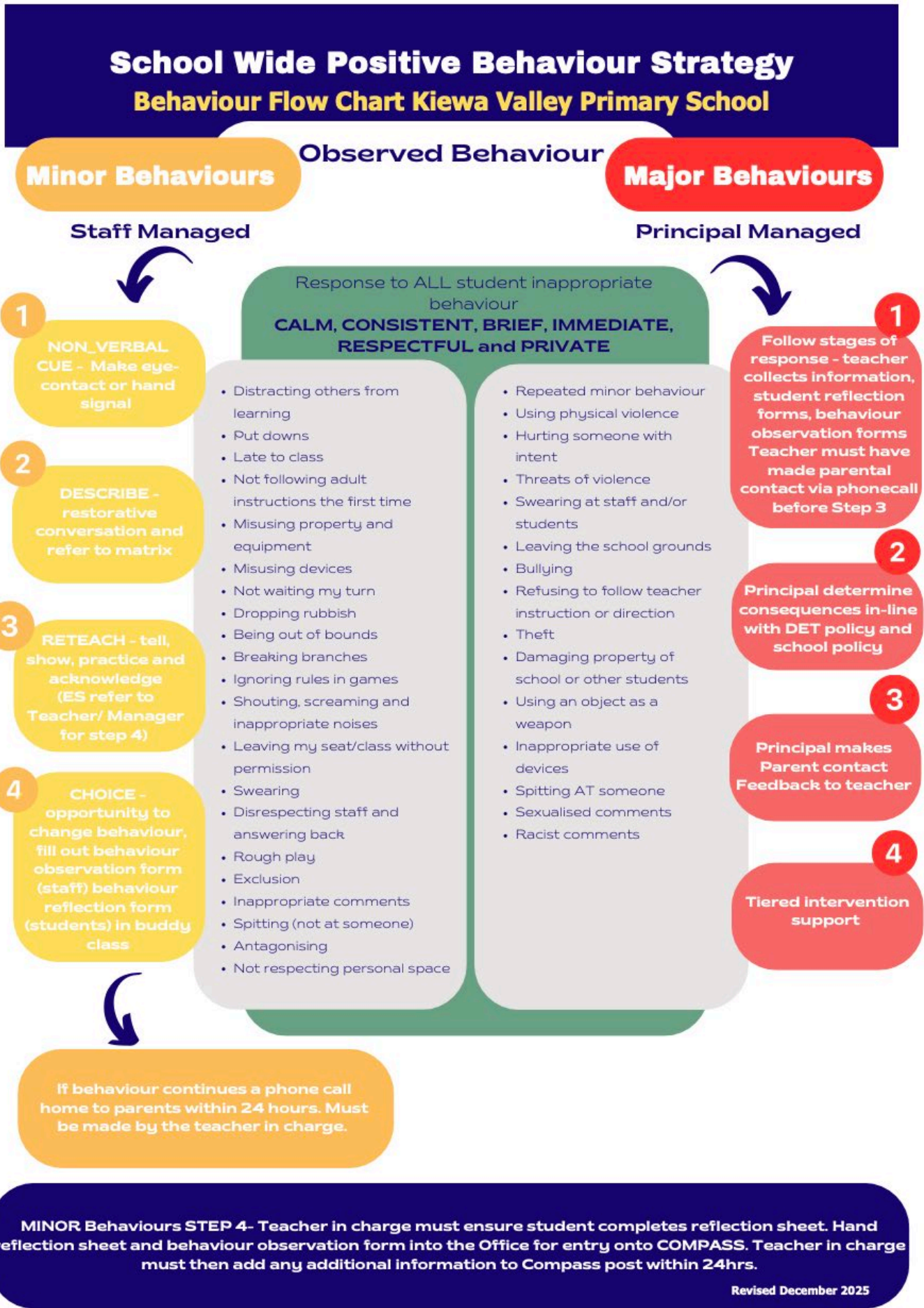
- [Work-Related Violence in Schools Policy](#)
- [Respectful Behaviours within the School Community Policy](#)
- [Respectful, safe, engaged: shared expectations to support student behaviour](#)

Kiewa Valley Primary School policies:

- Student Wellbeing and Engagement Policy
- Inclusion and Diversity Policy
- Bullying Prevention Policy
- Parent Complaints Policy
- Respect for School Staff Policy

## POLICY REVIEW AND APPROVAL

Policy last reviewed	Feb 2026
Approved by	School Council
Next scheduled review date	Feb 2030



If behaviour continues a phone call home to parents within 24 hours. Must be made by the teacher in charge.

**MINOR Behaviours STEP 4- Teacher in charge must ensure student completes reflection sheet. Hand reflection sheet and behaviour observation form into the Office for entry onto COMPASS. Teacher in charge must then add any additional information to Compass post within 24hrs.**

Revised December 2025